

DeltaSol® A/DeltaSol® AX/AX HE

Differential temperature controller for solar, heating & air conditioning systems



rosenthal design 



The **DeltaSol® A**, **DeltaSol® AX** and **DeltaSol® AX HE** controllers are the simplest solution for all differential controls. The version **DeltaSol® A** is equipped with an adjustable temperature difference and an **antifreeze function** which can be activated/deactivated by jumpers.

The version **DeltaSol® AX** presents an extended version which is additionally equipped with an adjustable target temperature for **minimum or maximum temperature limitation**.

Equipped with an electromechanical relay and a PWM output, the **DeltaSol® AX HE** controller manages the **speed control of a high-efficiency pump**.

The enclosed silicone sealing cord guarantees a protection against dripping water.

- Adjustable temperature difference 2 ... 16 K, hysteresis 1.6 K
- Antifreeze function adjustable by jumper/micro-switch
- Maximum or minimum temperature limitations adjustable by micro-switch (**DeltaSol® AX/AX HE**)
- Protection against dripping water
- Speed control of a high-efficiency pump with adjustable minimum speed (**DeltaSol® AX HE**)

Manuals:



RESOL DeltaSol® A

Price bracket A | Article no.: **115 211 23**

RESOL DeltaSol® A – Full kit

Incl. 2 Pt1000 sensors (1 x FKP6, 1 x FRP6)

Price bracket A | Article no.: **115 211 33**

Also available as 12V~ and 115V~ versions!

As above, but with **minimum or maximum temperature limitation**:

RESOL DeltaSol® AX

Price bracket A | Article no.: **115 211 73**

RESOL DeltaSol® AX – Full kit

Incl. 2 Pt1000 sensors (1 x FKP6, 1 x FRP6)

Price bracket A | Article no.: **115 211 83**

Also available as 12V~, 12V=, 24V= and 115V~ versions!

As above, but with a **PWM output for speed control of a high-efficiency pump**:

RESOL DeltaSol® AX HE

Price bracket A | Article no.: **115 213 43**

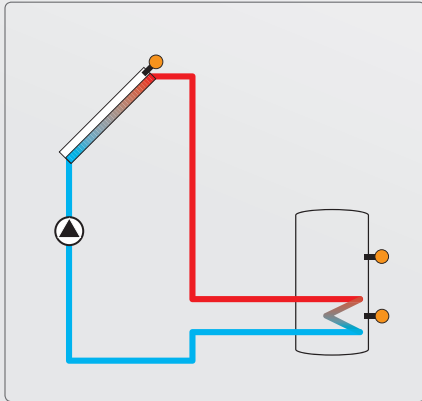
RESOL DeltaSol® AX HE – Full kit

Incl. 2 Pt1000 sensors (1 x FKP6, 1 x FRP6)

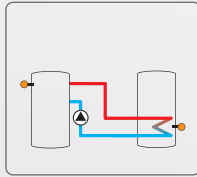
Price bracket A | Article no.: **115 213 53**

Customised and OEM versions are available on request. Please contact our sales team.

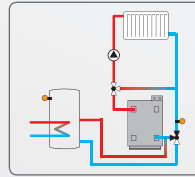
Examples



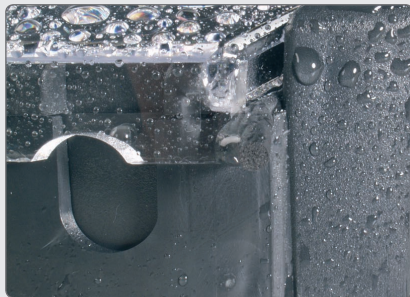
Solar system with 1 store



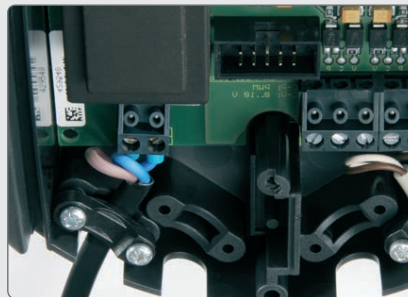
Heat exchange controller



Heating circuit return preheating

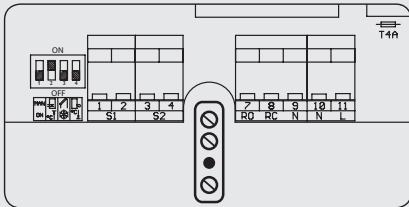


In water protected housing (dripping water)

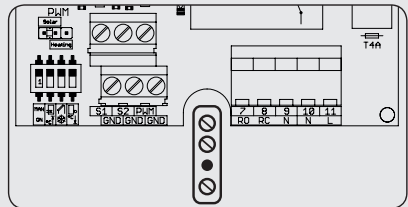


Strain reliefs for all lines. Simple electrical connection by pluggable terminals.

Electrical connection



DeltaSol® AX



DeltaSol® AX HE

Accessories

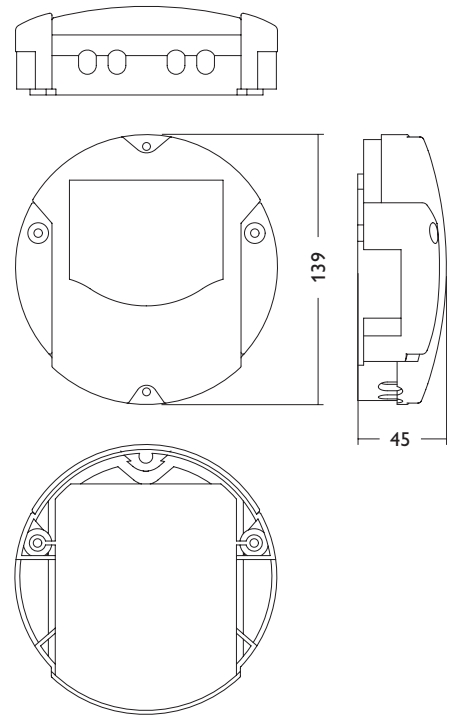
- 

RESOL HR230
Auxiliary relay
Price bracket A | Article no.: **280 002 60**
- 

RESOL HRG2
Housing for up to 2 HR230 auxiliary relays
Price bracket A | Article no.: **280 003 10**
- 

RESOL SP10
Sensor overvoltage protection
Price bracket A | Article no.: **180 110 70**

Technical data



Inputs: 2 Pt1000 temperature sensors

Outputs: 1 electromechanical relay (changeover), 1 PWM output (DeltaSol® AX HE)

PWM frequency: 1 kHz

PWM voltage: 11,0V

Switching capacity:

4 (1) A 240V~ (electromechanical relay)

Total switching capacity: 4 A 240V~

Power supply: 220 ... 240V~ (50 ... 60 Hz), 100 ... 240V~ (DeltaSol® AX HE)

Supply connection: type Y attachment

Power consumption:

1.4W, < 1W (DeltaSol® AX HE)

Mode of operation: type 1.B action

Rated impulse voltage: 2.5 kV

Functions:

antifreeze function, DeltaSol® AX/AX HE additionally with maximum or minimum temperature limitation

Housing: plastic, PC-ABS and PMMA

Mounting: wall mounting

Indication/Display: 1 control lamp

Operation: via potentiometre

Ingress protection: IP 20/EN 60529 (with IP 22 seal)

Protection class: II

Ambient temperature: 0 ... 40 °C

Pollution degree: 2

Dimensions: Ø 139 mm, depth 45 mm